



# PLACEMENT REPORT

BATCH 2020-22

A SPECTACULAR  
PLACEMENT  
SCRIPTED BY  
CLASS OF 2022  
**98.8%**





# RECORD 25% RISE IN AVERAGE SALARY



Jaipuria Institute of Management announces yet another spectacular placement season for the batch of 2020-22 with over 98% of its graduating students across 4 campuses receiving their choice of organizations and roles.

The class of 2022 excelled in their performances to grab best of the offers and raised their average salary by record 25% over last year. While centralized placements for all its four campuses gives our students an edge over other B-Schools recruiters to get a wide range of students to select from.

## **Sharp rise in offers from consulting, IT & ITES domain.**

It is re-emphasising of the trust and faith of recruiters with the students of Jaipuria that 25% of growth has been witnessed in this year's placements especially in the consulting, IT and ITES sectors, recruiting over 350+ students and Big 4 accounting firms making offers to over 150 students of Jaipuria.

# PLACEMENT HIGHLIGHTS

## Average Package

**11.49**

LPA

Top 10%

**10.51**

LPA

Top 20%

**9.42**

LPA

Top 50%

**7.8**

LPA

Overall Average

**27 LPA**

HIGHEST  
INTERNATIONAL  
PACKAGE

**19.18 LPA**

HIGHEST  
DOMESTIC  
PACKAGE

## LEADING RECRUITERS

90+

Deloitte.

70+

HCL

40+

ICICI Bank

20+

genpact

20+

EY  
Building a better  
working world

20+

pwc

## OFFER STATISTICS

**250+**

Total  
Recruiters  
Visited

**60+**

Student with  
multiple  
offers

**110+**

New  
Recruiters

**900+**

Total No.  
of offers

# PROFILES OFFERED



## FINANCE

Credit / Risk / Advisory / Portfolio Management / Financial Operations / Investment Banking / Financial Modeling / Spend Analytics / Digital Banking

## OPERATIONS

Supply Chain Consulting / Procurement Advisory / Service Operations / Analyst (Logistics)



## ANALYTICS

Business Analyst / Analytics Practitioner / Data Analytics / Cloud Specialist / Product Analyst / Artificial Intelligence / Machine Learning

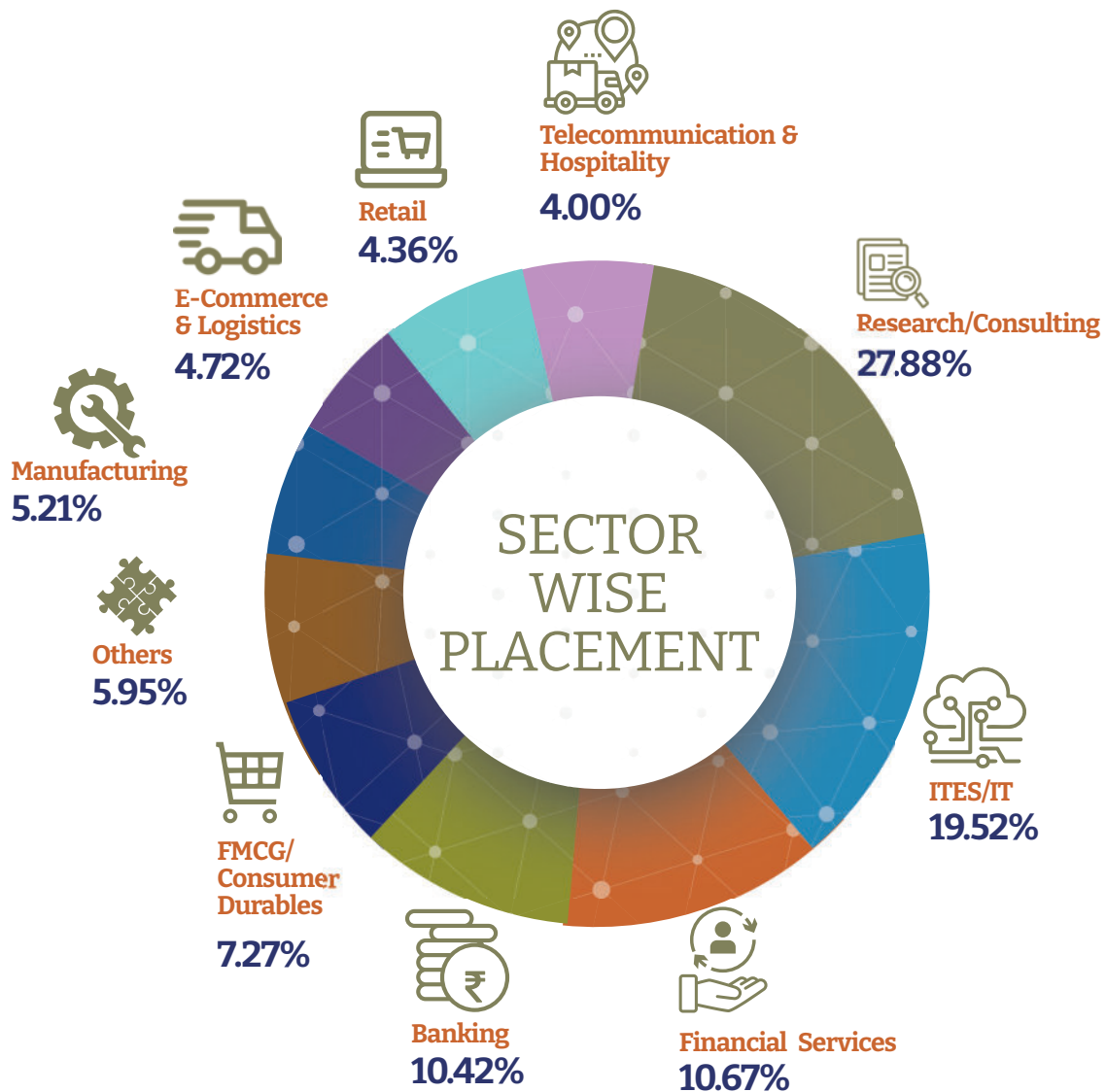
## MARKETING

Product Development / Research Analyst / Product Consultant / Customer Insights / Brand Marketing / Trade Marketing / Digital Marketing



## HUMAN RESOURCES

HR Transformation / Talent Acquisition / HR Analytics / HRBP / L&D / PMS



## FUNCTION WISE PLACEMENT

**36.2%**

Marketing & Sales

**26.8%**

Research & Analytics

**16.3%**

Operations

**14.1%**

HR & Project Management

**5.4%**

Retail & Logistics

**1.2%**

Others

  
45%



  
23%



  
13%



  
12%



  
5%



  
2%



# EDUCATIONAL BACKGROUND

## OUR PROMINENT RECRUITERS



#### **CORPORATE OFFICE**

Jaipuria Institute of Management  
1/3 (Block 1, Plot No.3) WHS Timber Market,  
Kirti Nagar, Near Mayapuri Chowk, New Delhi- 110015  
M. +91 9810613213, 9873028515  
E. [placements@jaipuria.ac.in](mailto:placements@jaipuria.ac.in)

---

#### **LUCKNOW**

Jaipuria Institute of Management  
Vineet Khand, Gomti Nagar,  
Lucknow 226 010  
M. +91 9711943794  
E. [placements.lucknow@jaipuria.ac.in](mailto:placements.lucknow@jaipuria.ac.in)

---

#### **NOIDA**

Jaipuria Institute of Management  
A-32A, Sector 62, Noida 201 309  
M. +91 953656016  
E. [placements.noida@jaipuria.ac.in](mailto:placements.noida@jaipuria.ac.in)

---

#### **JAIPUR**

Jaipuria Institute of Management  
1, Bambala Institutional Area,  
Pratap Nagar, Sanganer, Jaipur 302 033  
M. +91 7510099112  
E. [placements.jaipur@jaipuria.ac.in](mailto:placements.jaipur@jaipuria.ac.in)

---

#### **INDORE**

Jaipuria Institute of Management  
Campus: Dakachya, Indore Dewas Highway,  
Near Shipra Naka, Indore 453 771  
M. +91 9179555441  
E. [placements.indore@jaipuria.ac.in](mailto:placements.indore@jaipuria.ac.in)